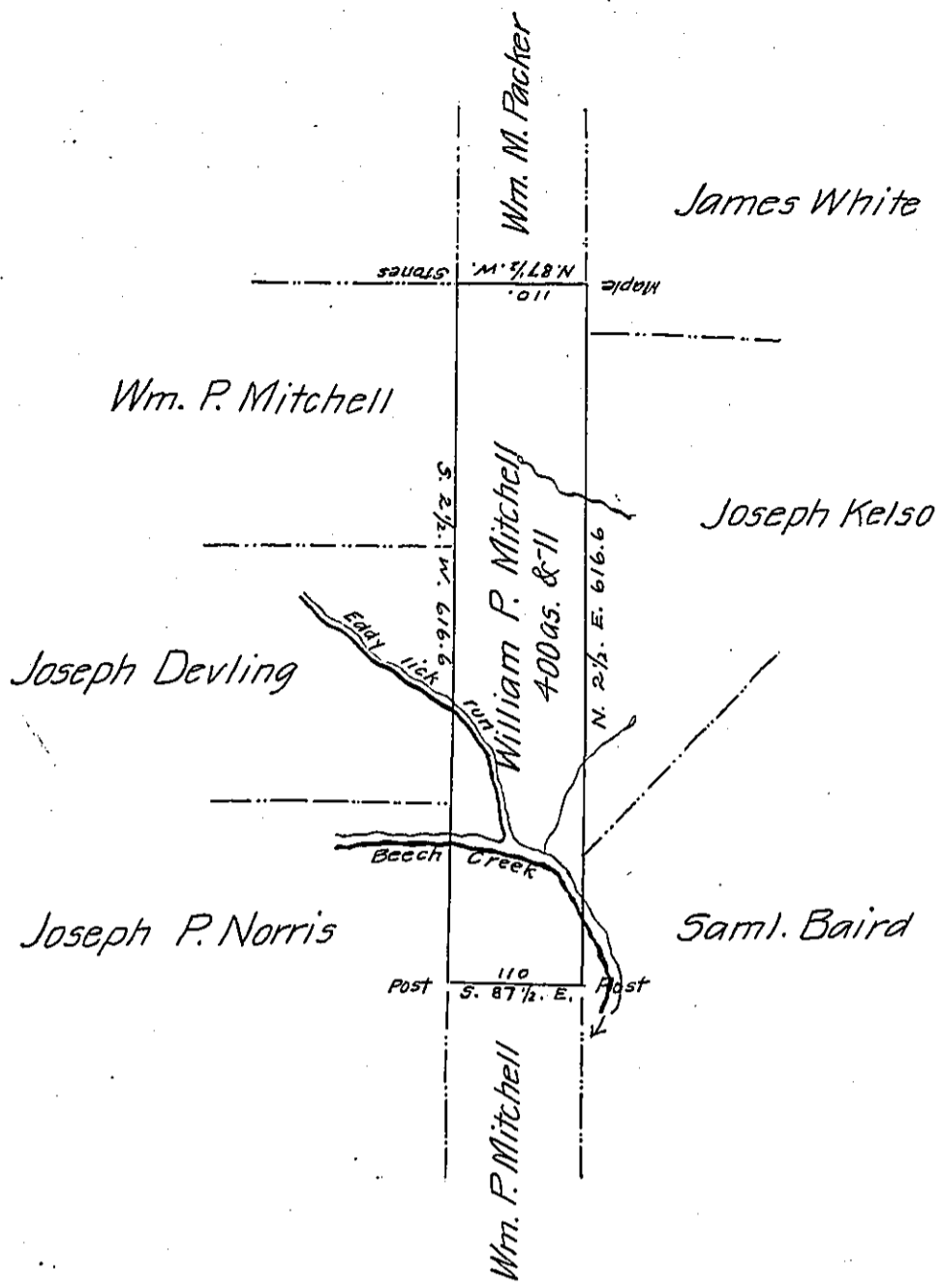


FORM No. 1.



A tract of land situated on the waters of Beech Creek Partly in Snowshoe & Curten townships Centre County Containing four hundred acres and the Allowance & Surveyed the 8th. day of August 1866 on a Warrant granted to William P. Mitchell Dated 7th. day of June 1866.

Henry P. Treziulny
County Surveyor

To. J. M. Campbell Esqr. }
Surveyor General }

IN TESTIMONY that the above is a copy of the original remaining on file in the Department of Internal Affairs of Pennsylvania, made conformably to an Act of Assembly approved the 16th day of February, 1833, I have hereunto set my Hand and caused the Seal of said Department to be affixed at Harrisburg, this tenth day of March 1906

George P. Brown
Secretary of Internal Affairs.